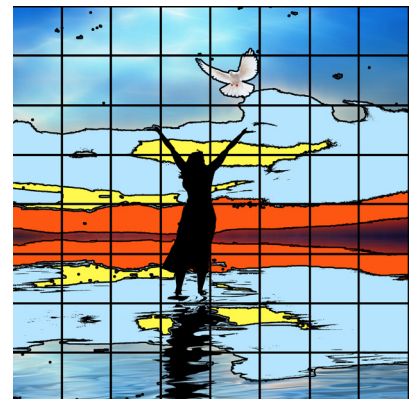
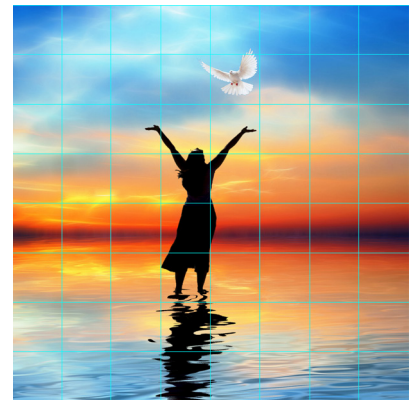
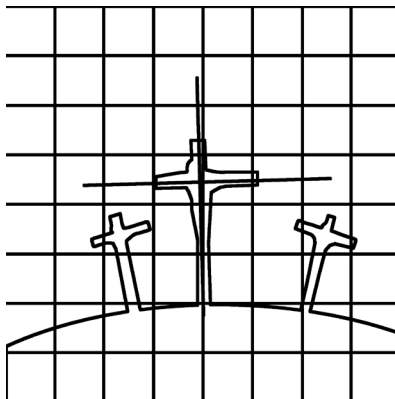
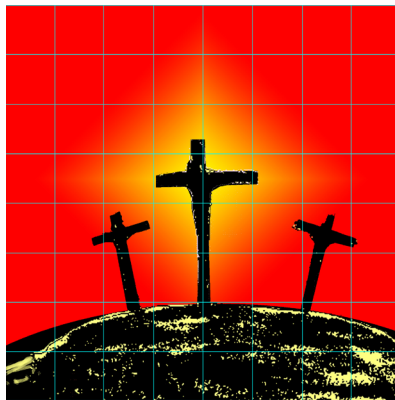
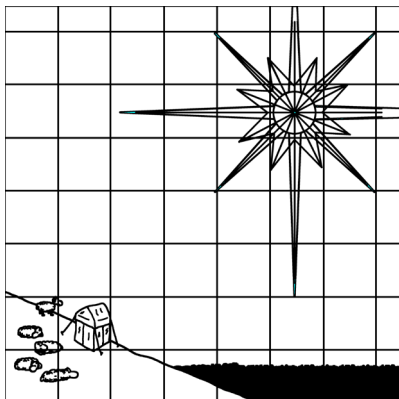
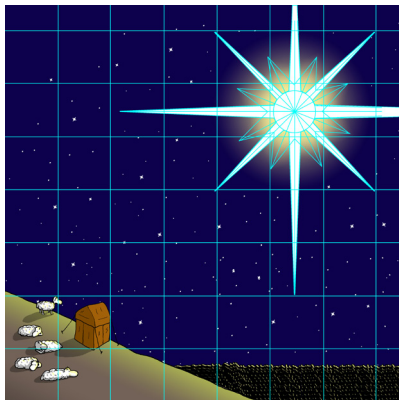
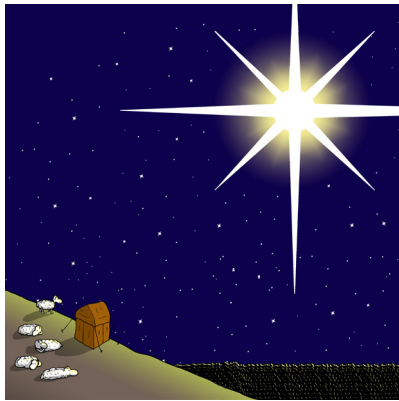


Mural Design to Creation: at Camp Pallatanga, Ecuador

by Rich Diesslin

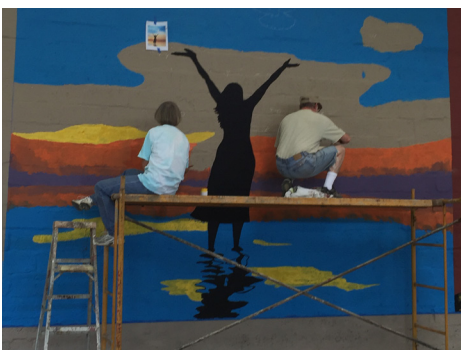
Design:



Original design, to grid, to outline. Ideally the outline or grid is then projected onto the wall. In this case the dimensions of the space ended up being about 15 x 15 feet which changed the original orientation from portrait to landscape. Fortunately the mural designs were mostly oriented around the center art so this change affected the grid more than the art. Some tweaking was needed, but overall it worked out pretty well.

Implementation:

Mindy painted the big areas, Rachel became our animal specialist, and I did the rest.



Implementation continued:

Total time was about 6 days from base coat to finished murals.



The Finished Murals (and with and without the climbing wall)

